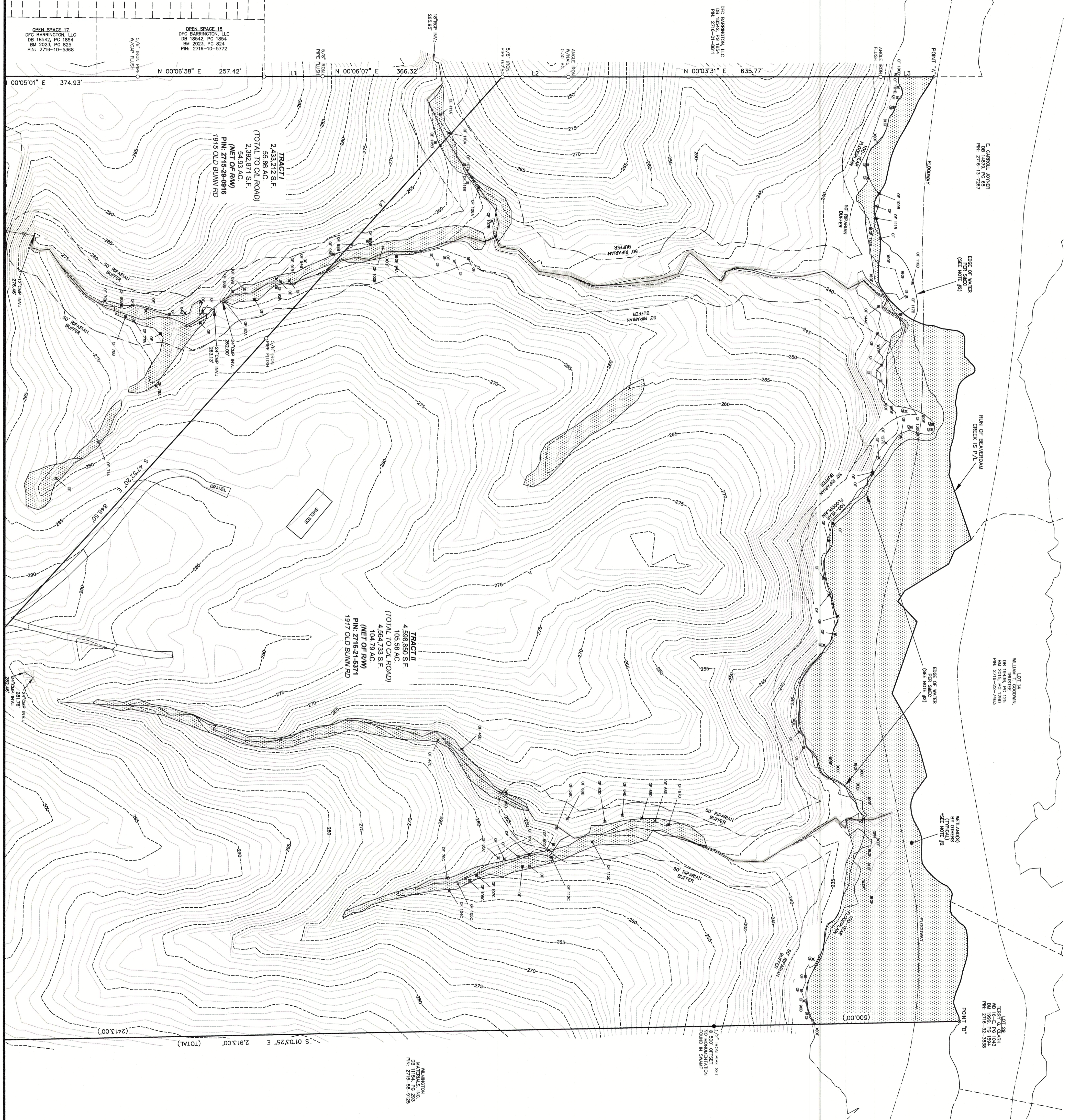


| LINE # | LENGTH | BEARING | LINE # | LENGTH | BEARING | LINE # | LENGTH | BEARING |
|--------|--------|---------------|--------|--------|---------------|--------|--------|---------------|
| P1 | 8.99 | S 81°17'47" E | P42 | 5.28 | N 133°47' E | P122 | 7.28 | N 55°50'17" E |
| P2 | 19.97 | S 87°27'18" E | P43 | 10.01 | N 23°17' E | P123 | 8.87 | N 49°34'47" E |
| P3 | 7.83 | S 82°35'47" E | P44 | 13.17 | N 18°56'56" E | P124 | 14.86 | N 55°50'17" E |
| P4 | 38.91 | S 81°15' E | P45 | 8.86 | N 13°07' E | P125 | 14.86 | N 55°50'17" E |
| P5 | 16.30 | S 81°15' E | P46 | 8.76 | N 13°07' E | P126 | 11.41 | N 33°02'47" E |
| P6 | 21.96 | S 81°17' E | P47 | 4.71 | N 21°47'47" E | P127 | 2.82 | N 30°27'26" E |
| P7 | 16.21 | S 82°35'47" E | P48 | 2.46 | N 27°27' E | P128 | 5.79 | N 58°54' E |
| P8 | 11.52 | S 82°35'47" E | P49 | 4.11 | N 27°27' E | P129 | 3.02 | N 65°32'30" E |
| P9 | 9.31 | S 82°35'47" E | P50 | 6.50 | N 27°27' E | P130 | 4.01 | S 85°32'30" E |
| P10 | 4.97 | S 27°27' E | P51 | 10.27 | S 86°31'52" E | P131 | 11.97 | S 29°07'47" E |
| P11 | 3.55 | S 27°27' E | P52 | 4.26 | N 82°31'52" E | P132 | 3.44 | N 20°27'47" E |
| P12 | 11.76 | S 82°35'47" E | P53 | 3.42 | N 71°29'56" E | P133 | 6.76 | N 43°54'47" E |
| P13 | 5.33 | S 82°35'47" E | P54 | 3.29 | N 68°33'53" E | P134 | 4.36 | N 33°52'52" E |
| P14 | 4.97 | S 27°27' E | P55 | 3.29 | N 68°33'53" E | P135 | 15.26 | N 88°17'17" E |
| P15 | 2.82 | S 27°27' E | P56 | 4.26 | N 82°31'52" E | P136 | 7.39 | N 21°54'47" E |
| P16 | 4.97 | S 27°27' E | P57 | 12.21 | N 49°34'47" E | P137 | 8.17 | N 58°54' E |
| P17 | 5.33 | S 82°35'47" E | P58 | 12.21 | N 49°34'47" E | P138 | 10.88 | N 84°58'17" E |
| P18 | 2.82 | S 27°27' E | P59 | 4.26 | N 82°31'52" E | | | |
| P19 | 4.97 | S 27°27' E | P60 | 4.26 | N 82°31'52" E | | | |
| P20 | 2.82 | S 27°27' E | P61 | 4.26 | N 82°31'52" E | | | |
| P21 | 4.97 | S 27°27' E | P62 | 4.26 | N 82°31'52" E | | | |
| P22 | 4.97 | S 27°27' E | P63 | 4.26 | N 82°31'52" E | | | |
| P23 | 4.97 | S 27°27' E | P64 | 4.26 | N 82°31'52" E | | | |
| P24 | 4.97 | S 27°27' E | P65 | 4.26 | N 82°31'52" E | | | |
| P25 | 4.97 | S 27°27' E | P66 | 4.26 | N 82°31'52" E | | | |
| P26 | 4.97 | S 27°27' E | P67 | 4.26 | N 82°31'52" E | | | |
| P27 | 4.97 | S 27°27' E | P68 | 4.26 | N 82°31'52" E | | | |
| P28 | 4.97 | S 27°27' E | P69 | 4.26 | N 82°31'52" E | | | |
| P29 | 4.97 | S 27°27' E | P70 | 4.26 | N 82°31'52" E | | | |
| P30 | 4.97 | S 27°27' E | P71 | 4.26 | N 82°31'52" E | | | |
| P31 | 4.97 | S 27°27' E | P72 | 4.26 | N 82°31'52" E | | | |
| P32 | 4.97 | S 27°27' E | P73 | 4.26 | N 82°31'52" E | | | |
| P33 | 4.97 | S 27°27' E | P74 | 4.26 | N 82°31'52" E | | | |
| P34 | 4.97 | S 27°27' E | P75 | 4.26 | N 82°31'52" E | | | |
| P35 | 4.97 | S 27°27' E | P76 | 4.26 | N 82°31'52" E | | | |
| P36 | 4.97 | S 27°27' E | P77 | 4.26 | N 82°31'52" E | | | |
| P37 | 4.97 | S 27°27' E | P78 | 4.26 | N 82°31'52" E | | | |
| P38 | 4.97 | S 27°27' E | P79 | 4.26 | N 82°31'52" E | | | |
| P39 | 4.97 | S 27°27' E | P80 | 4.26 | N 82°31'52" E | | | |
| P40 | 4.97 | S 27°27' E | P81 | 4.26 | N 82°31'52" E | | | |
| P41 | 4.97 | S 27°27' E | P82 | 4.26 | N 82°31'52" E | | | |



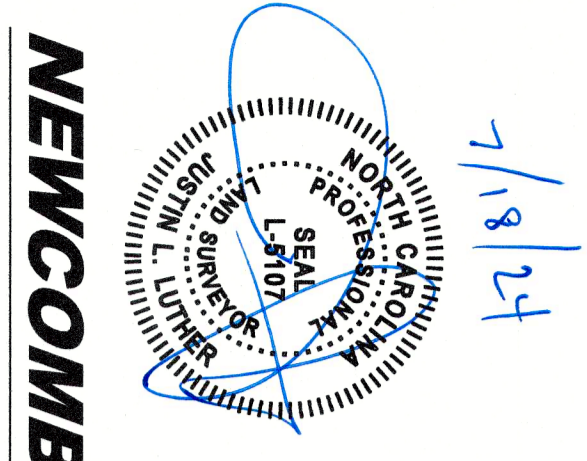
MATCH LINE - SHEET 1

LEGEND and NOMENCLATURE

| | |
|--|--------------------------------------|
| | Easement of Right |
| | Easement of Way |
| | Easement of Utility |
| | Easement of Support |
| | Easement of Access |
| | Easement of Light |
| | Easement of Air |
| | Easement of Sound |
| | Easement of Privacy |
| | Easement of Quiet Enjoyment |
| | Easement of Support of Adjacent Land |
| | Easement of Support of Structure |
| | Easement of Support of Foundation |
| | Easement of Support of Wall |
| | Easement of Support of Roof |
| | Easement of Support of Chimney |
| | Easement of Support of Staircase |
| | Easement of Support of Elevator |
| | Easement of Support of Driveway |
| | Easement of Support of Walkway |
| | Easement of Support of Fences |
| | Easement of Support of Gates |
| | Easement of Support of Pools |
| | Easement of Support of Hot Tubs |
| | Easement of Support of Decks |
| | Easement of Support of Porches |
| | Easement of Support of Staircases |
| | Easement of Support of Balconies |
| | Easement of Support of Terraces |
| | Easement of Support of Patios |
| | Easement of Support of Lawns |
| | Easement of Support of Gardens |
| | Easement of Support of Trees |
| | Easement of Support of Shrubs |
| | Easement of Support of Flowers |
| | Easement of Support of Fences |
| | Easement of Support of Gates |
| | Easement of Support of Pools |
| | Easement of Support of Hot Tubs |
| | Easement of Support of Decks |
| | Easement of Support of Porches |
| | Easement of Support of Staircases |
| | Easement of Support of Balconies |
| | Easement of Support of Terraces |
| | Easement of Support of Patios |
| | Easement of Support of Lawns |
| | Easement of Support of Gardens |
| | Easement of Support of Trees |
| | Easement of Support of Shrubs |
| | Easement of Support of Flowers |

LINE TABLE - THIS SHEET ONLY

| LINE # | LENGTH | BEARING |
|--------|--------|---------------|
| L1 | 134.96 | N 07°14'47" E |
| L2 | 134.96 | N 07°14'47" E |
| L3 | 716.91 | S 52°53'37" E |



BOUNDARY & TOPOGRAPHIC SURVEY
PROPERTIES OF
THOMAS C. & JILL D. HENDRICKSON
 WAKE COUNTY NORTH CAROLINA

SCALE: 1" = 100'