

Public Works

ZEBULON

NORTH CAROLINA

Illicit Discharge Detection & Elimination

Municipal Separate Storm Sewer Systems

MS4s

Stormwater Discharge Permit

NPDES

National Pollutant Discharge Elimination System
Permit Number NCS000557

Regulated municipalities are issued a stormwater discharge permit by state environmental agency or the US EPA. These permits require the development and implementation of an operating and maintenance program to control stormwater pollution.

The Goal: Protect Our Rivers, Streams, and Water Bodies



Municipal
Separate
Storm
Sewer
System

Also know as:
MS4

Why?

Treated

Sanitary Sewer

- Showers
- Bathrooms
- Sinks
- Laundry

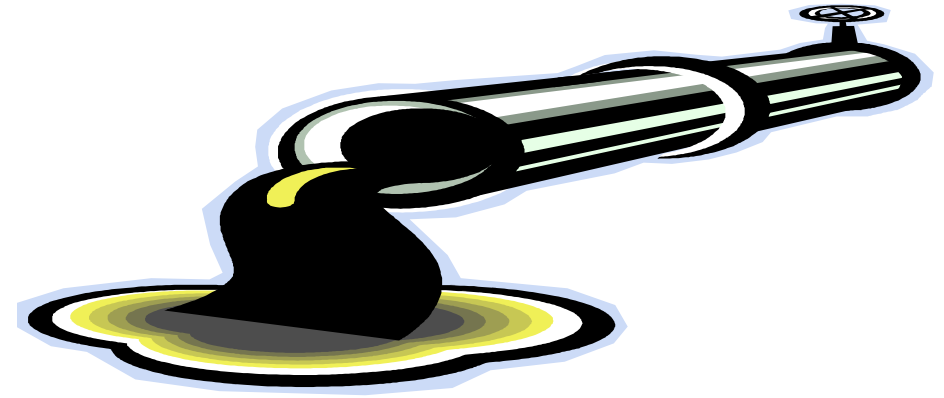
Untreated

Stormwater

- Rainfall
- Snow Melt

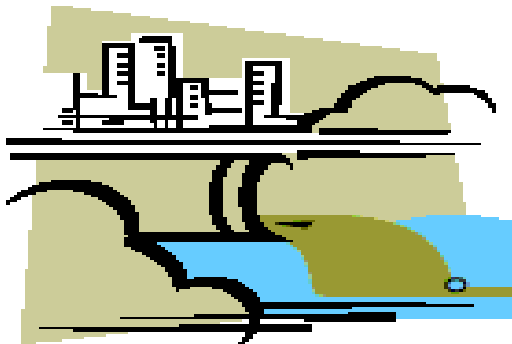


Illicit Discharges



Any disposal, dumping, **spill**, leak, or other discharge of anything other than stormwater into or onto:

- -Stormwater catch basin
- -Stormwater drainage system
- -Any water body
- -Land in close proximity to any of the above so the substance may reach the stormwater drainage system or any water body



Examples of illicit discharges

- Motor oil or other automotive fluids
- Water runoff from a commercial car wash
- Excessive antifreeze or oil spilling from vehicles
- Paint, cement or sediment slurry
- Detergents/Cleaning agents ex.
Dirty mop water

Municipal Employees & IDDE

What do we do?

- Receive calls from citizens and town staff
- Stormwater facility Inspections
- Determine if an illicit discharge or connection has occurred
- Find out who is responsible
- Provide enforcement against who is responsible
 - Issue fines up to \$25,000 per day
 - Make sure the discharge is cleaned up
 - Make sure steps are taken to prevent it from happening again

Illicit Discharge Detection

Identifying Illicit Discharges





What is it? **Leaves blocking
catch basin.**



What is it? **Dumpster Juice.**



**What is it? Automotive fluid,
specifically antifreeze.**



What is it? Discharge where vehicles are repaired.



What is it? Soap and detergent.





townofzebulon.org

What is it? **Sewage Overflow.**



What is it? Silt Fence not working properly allowing sediment loss.

townofzebulon.org



Good Silt Fence Installation



Unidentified Substance



Stream:

Behind
auto shop with antifreeze.



Pond:

Behind auto shop with antifreeze and oil.



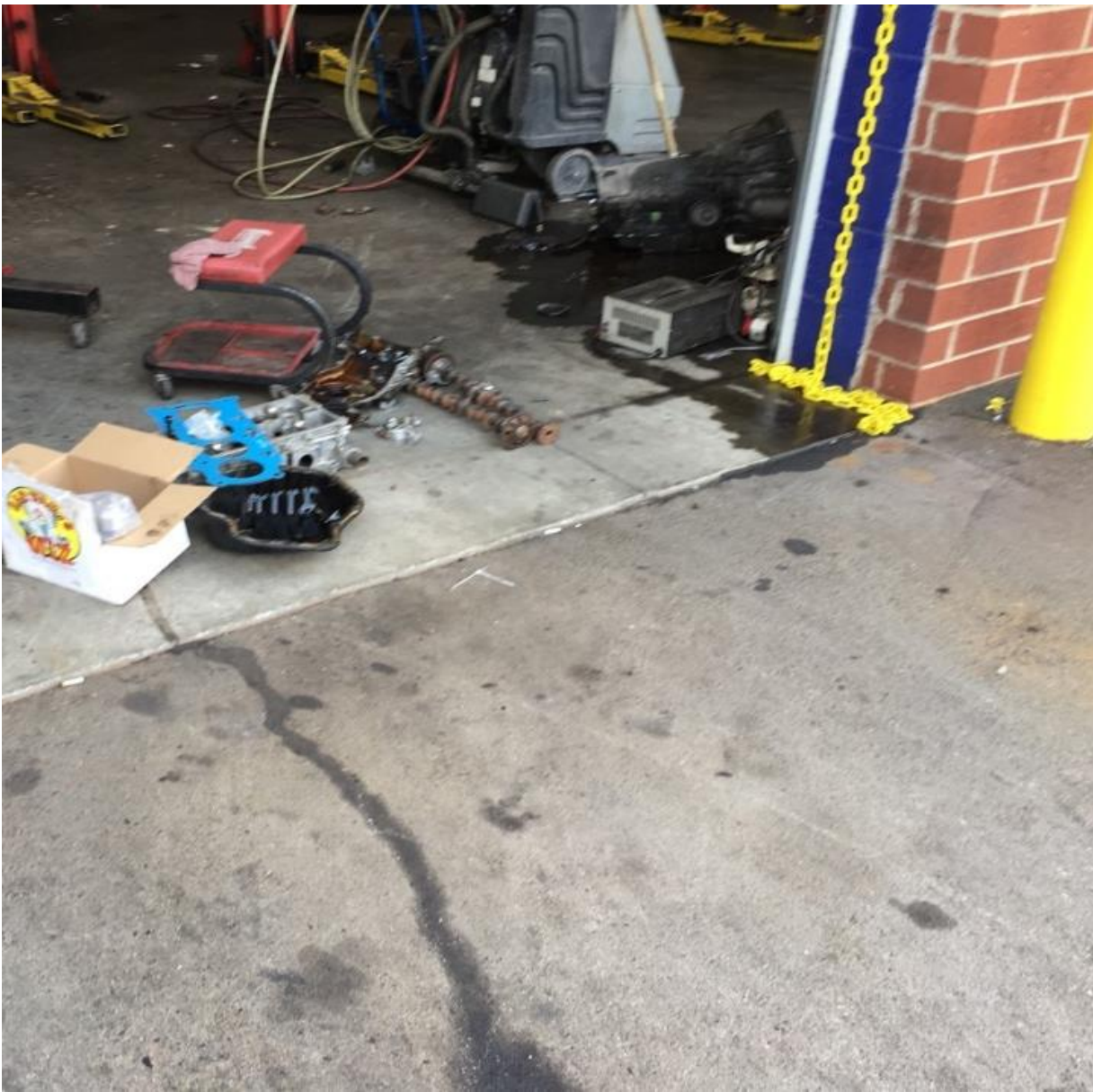


What is it? Unidentified substance in a Wetland.



Dumpster Juice





Automotive Fluids



What is it? Old Paint Spill



What is it? Grease Bin overflow at restaurant.



Grease Trap Overflow



Spill Kit Locations

Fire Station #1 113 E. Vance Street

Zebulon Public Works 450 E. Horton Street

Extra Spill Control Materials Stored at the Public Works Yard Waste Facility on E. Horton Street.

Kevin Watson

Stormwater Manager

919-823-1846

kwatson@townofzebulon.org

Questions?

